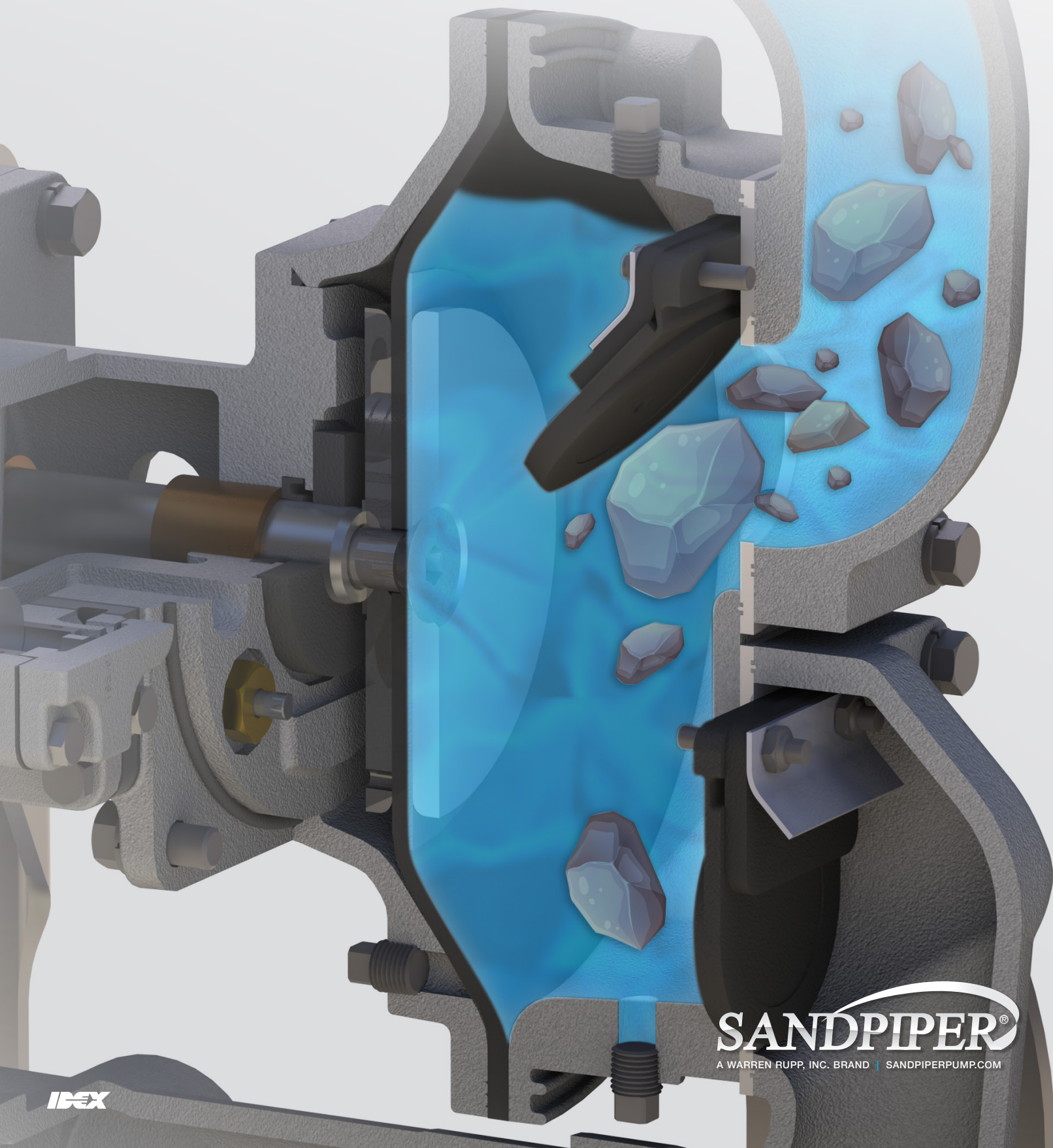


HEAVY DUTY FLAP VALVE PUMPS

For Fluids Containing up to Line Size Solids



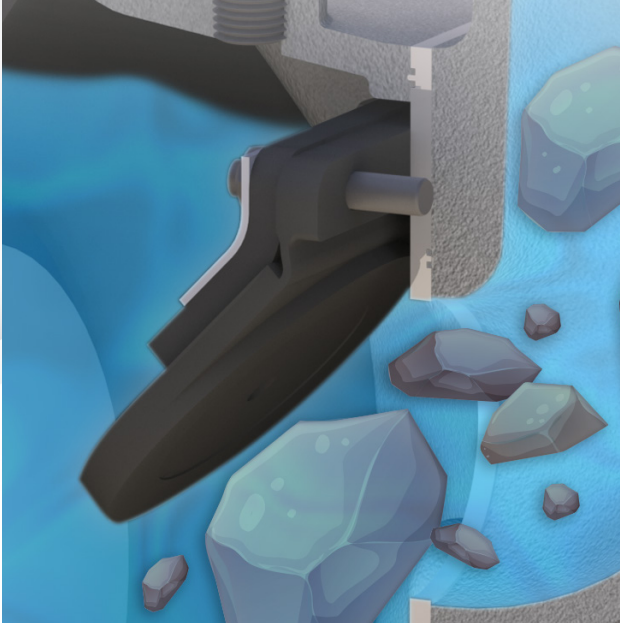
OUR SIGNATURE
ENSURES YOUR SUCCESS



SANDPIPER®
A WARREN RUPP, INC. BRAND | SANDPIPERPUMP.COM

KEY ADVANTAGES OF SANDPIPER

AN IDEAL SOLUTION FOR ABRASIVE SLURRIES, SUSPENDED, NON-SUSPENDED & LINE SIZE SOLIDS



LINE SIZE SOLIDS FLAP VALVE VS. BALL VALVE PUMPS

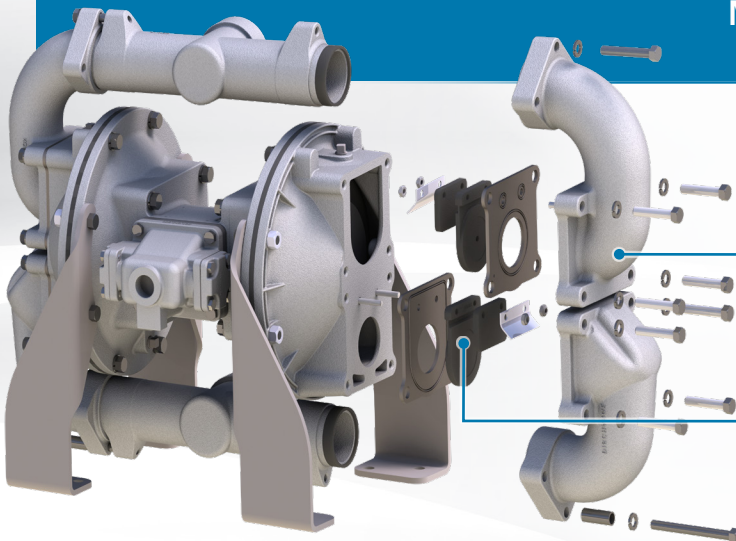
Flap Check Valve Pumps

Have a large flow area to allow up to line size solids to pass directly through the pump. Additionally, the bottom discharge design helps prevent these solids from settling in the unit.

Ball Check Valve Pumps

Have much less flow area for solids to pass through. Large solids get stuck in the suction manifold and small solids can settle in the outer chamber, affecting pump performance.

EASE OF MAINTENANCE METALLIC PUMPS



Quick Access to Serviceable Components

To help increase productivity and reduce downtime.

Removable Elbows

By removing the bolts that secure the elbows, it allows access to clear simple clogs without disassembling the entire pump.

Flap Check Valves

With the elbows removed, the flap valves can be inspected and / or replaced as needed.

HEAVY DUTY FLAP VALVE PUMPS

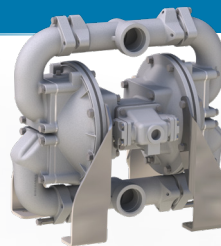
E SOLIDS REQUIREMENTS

SUPERIOR SUCTION LIFT FLAP VALVE VS. BALL VALVE PUMPS

Suction Lift Advantage

SANDPIPER's Flap Valve design provides for superior suction lift capabilities up to 24 feet in water. Diaphragm placement and flap valve seating combine to create a unit capable of suction lifts 15% greater than Ball Valve pumps.

These capabilities are from a dry prime, making the SANDPIPER Flap Valve Pump an excellent solution, in situations where limited choices are available for pump priming.



UP TO
24 FT. (7.3M)
SUCTION
FLAP VALVE PUMPS



UP TO
24 FT. (6.1M)
SUCTION
BALL VALVE PUMPS

EASE OF MAINTENANCE NON-METALLIC PUMPS

Quick Access to Serviceable Components

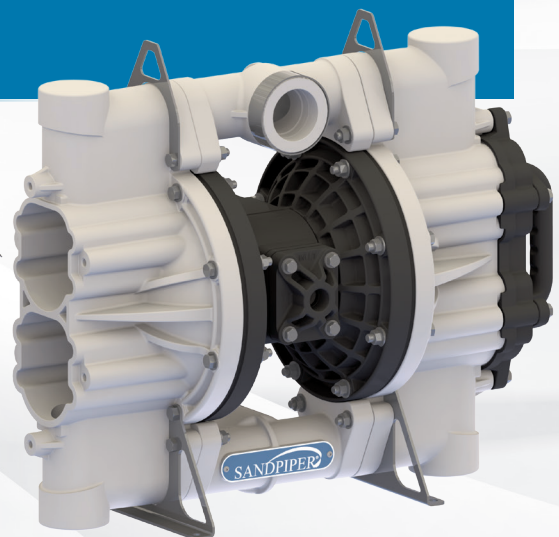
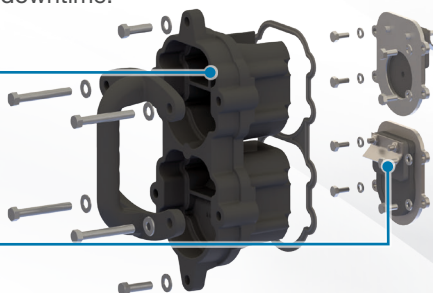
To help increase productivity and reduce downtime.

Remove Clean-Out Cap

By simply removing six bolts securing the clean-out cap in place, it allows access to clear simple clogs without disassembling the entire pump.

Flap Check Valves

With the clean-out cap removed, the flap valves can be inspected and / or replaced as needed. Four bolts hold the modular flap valves in place for quick maintenance and repair.



FEATURES & BENEFITS



Thick Manifold & Chamber Walls

Greater wear resistance when pumping solids and solid laden slurries, providing extended service life



Stainless Steel Seats

Provide long-lasting abrasion resistance and solids handling durability



Robust Diaphragm Connecting Rod

Guaranteed not to bend or break; assures reliable and consistent diaphragm operation



Cross-Drilled Directional Spool Valve

Guarantees the pump will not stall and ensures on/off reliability



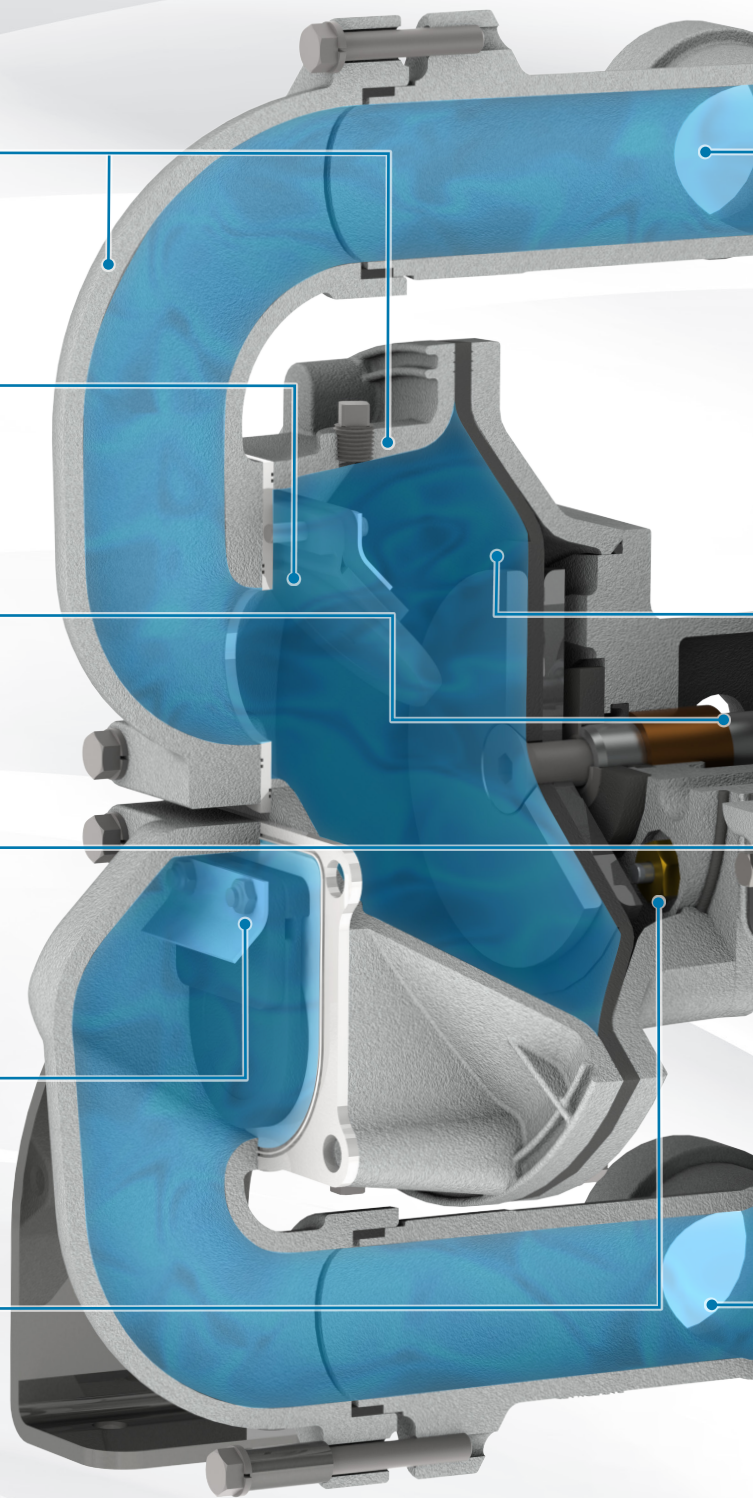
Easy Access To Flap Valves

Check Valve Flaps can be quickly cleaned or replaced without removing the pump from service

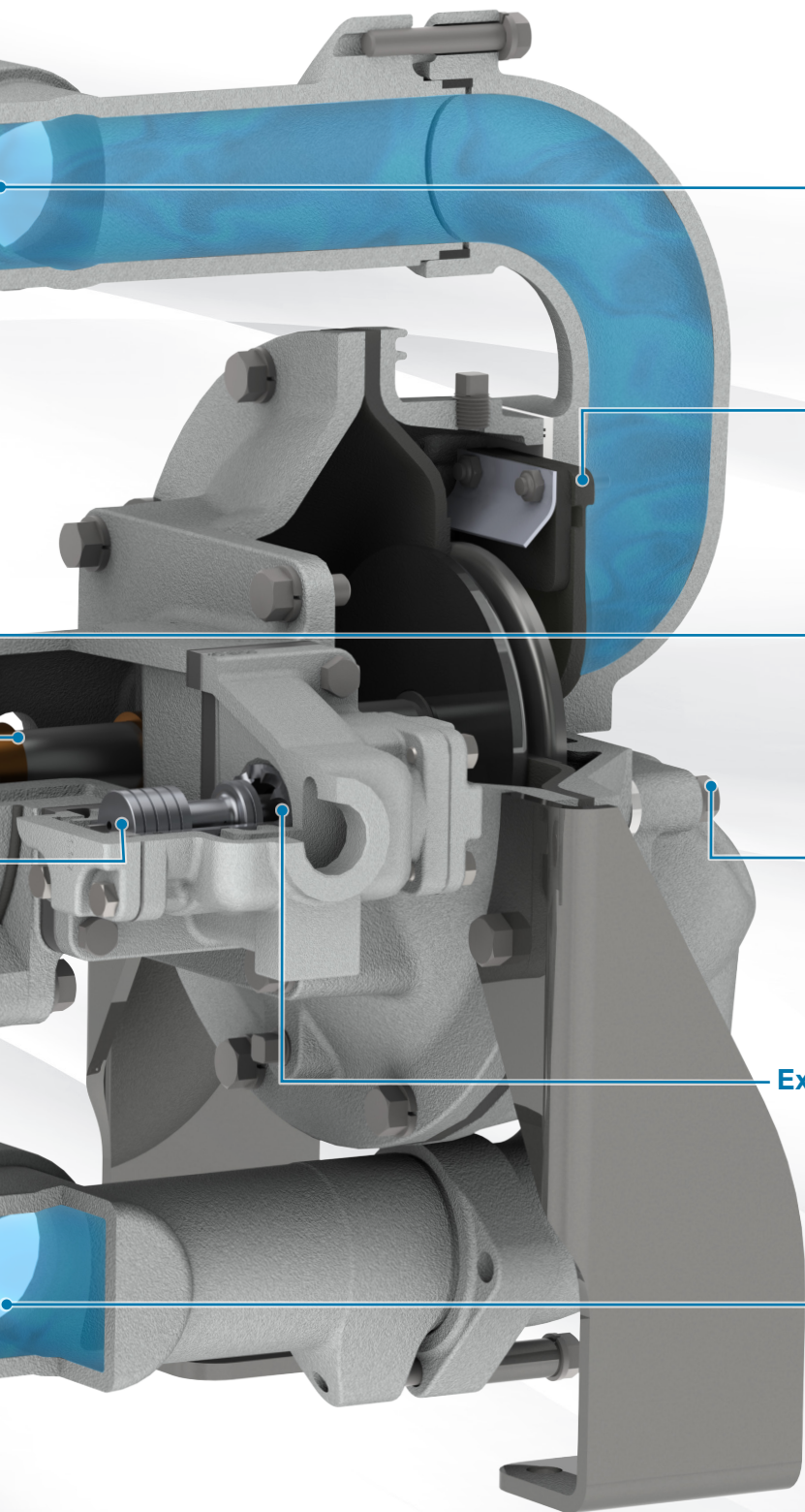


Heavy Duty Actuator Plungers

Ensures reliable pilot valve operation



TS - METALLIC



Dynamic Manifold Connections

Allow suction and discharge manifolds to be positioned in various directions



Flap Valve Construction

Can pass up to line size solids, enabling higher suction lift



Diaphragm Wear Pads

Extend the life of the diaphragm by reducing the frictional stresses associated with the outer diaphragm plate during operation



All Bolted Construction

Ensures sealing forces are applied evenly across the pump for leak-free operation



Externally Serviceable Air Distribution System

Allows for quick and easy access to the main air drive components without disassembly of the entire pump and / or removing it from service



Top Suction, Bottom Discharge Porting

Easier evacuation of fluids containing large solids and settling materials



FEATURES & BENEFITS



Lightweight & Durable

The non-metallic, lightweight design makes it easily portable at 53 lbs (24 kg)



Robust Diaphragm Connecting Rod

Guaranteed not to bend or break; assures reliable and consistent diaphragm operation



Stainless Steel Seats

Provide long-lasting abrasion resistance and solid handling durability



Easy Access To Flap Valves

Check Valve Flaps can be quickly cleaned or replaced without removing the pump from service



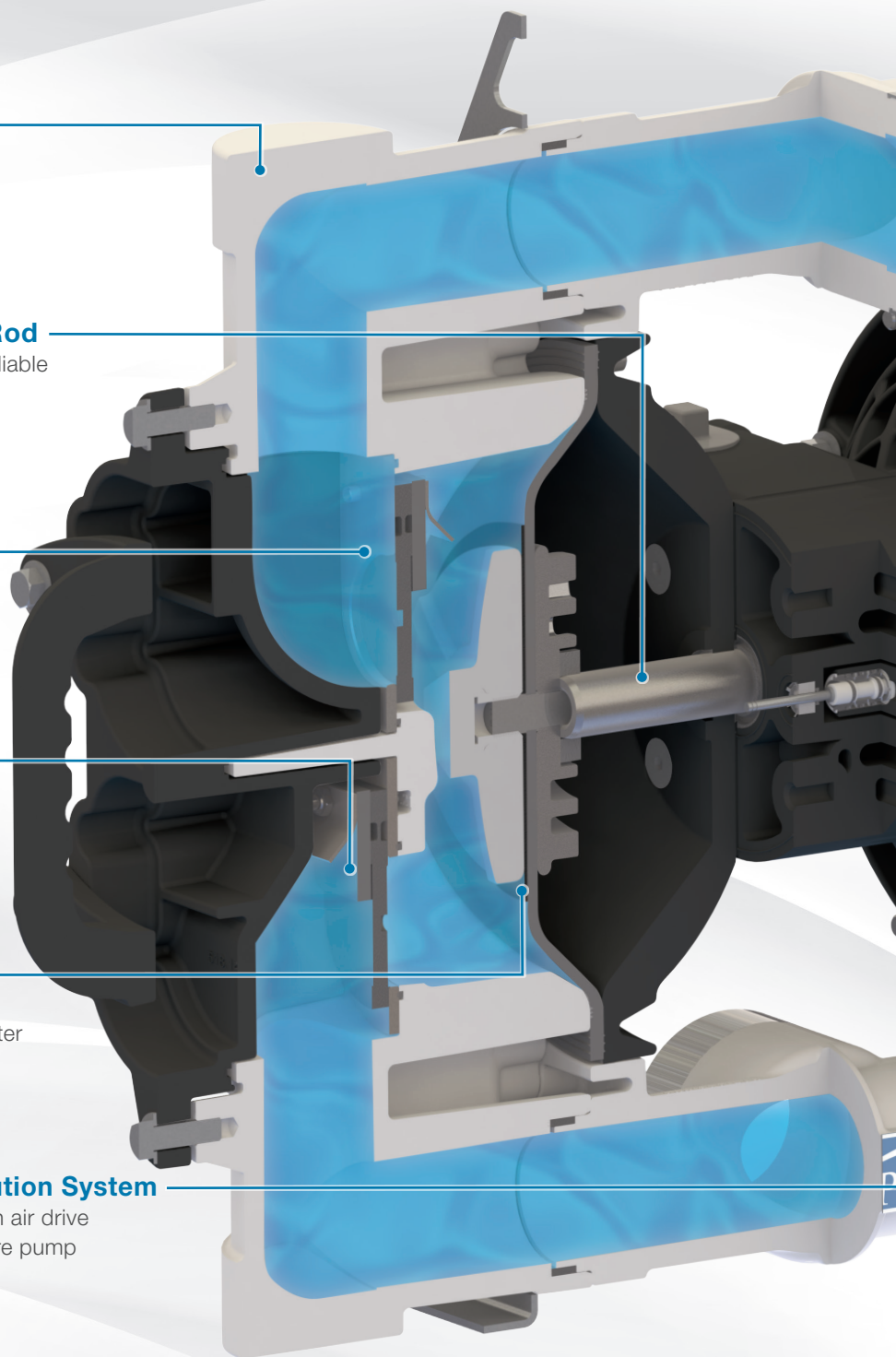
Diaphragm Wear Pads

Extend the life of the diaphragm by reducing the frictional stresses associated with the outer diaphragm plate during operation

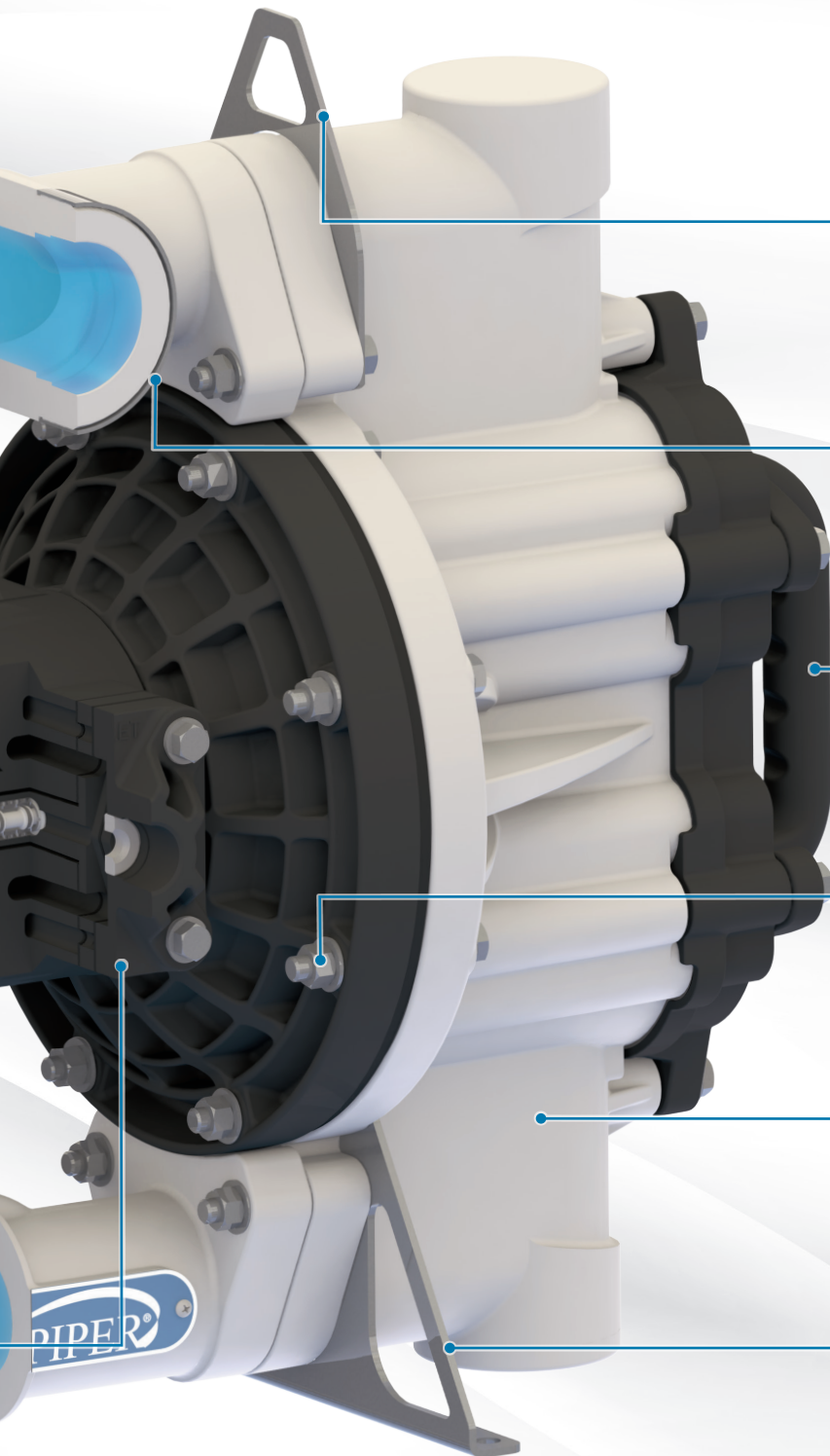


Externally Serviceable Air Distribution System

Allows for quick and easy access to the main air drive components without disassembly of the entire pump and / or removing it from service



TS - NON-METALLIC



Stainless Steel Hanging Brackets

Stainless steel hanging points located on the manifold allow for multiple mounting options



Dynamic Manifold Connections

Allow suction and discharge manifolds to be positioned in various directions



Ergonomic Handle

Lifting handles come standard, allowing for easy pump transport; handles can be rotated 90 degrees for proper ergonomics, depending on desired use



All Bolted Construction

Ensures sealing forces are applied evenly across the pump for leak-free operation



Versatile Design

This pump will function in most positions, including uneven surfaces



Purpose Built Base

The threaded port version features stainless steel mounting feet and the flanged port version features Polypropylene mounting feet



HEAVY DUTY FLAP VALVE PUMPS - METALLIC & NON-METALLIC

PERFORMANCE & SPECIFICATIONS

What is **EVOLUTION**?

OPTIMIZED PERFORMANCE

Optimized performance without sacrificing proven reliability. These pumps have undergone an engineering EVOLUTION, leveraging trusted and proven product designs to improve their performance by application of advanced engineering methods.

SPECIFICATIONS

METALLIC

SIZES

1 - 4" (25.4 - 101.6mm)

MAX FLOW

70 - 310 GPM (265 - 1173 LPM)

SOLIDS HANDLING

1 - 3" (25.4 - 75mm)

DISPLACEMENT

0.10 - 1.6 gallon (0.37 - 6.06 liter)

NON-METALLIC

SIZES

2" (50mm)

MAX FLOW

150 GPM (568 LPM)

SOLIDS HANDLING

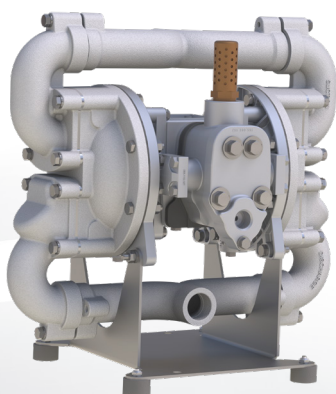
1.8" (46mm)

DISPLACEMENT

0.50 gallon (1.9 liter)

1" **HDF1 Metallic**

25mm



SOLIDS HANDLING

Up to 1" (25.4 mm)

MAX FLOW

70 GPM (265 LPM)

MAX PRESSURE

125 psi (8.6 bar)

DISPLACEMENT

0.10 gallon (.37 liter)

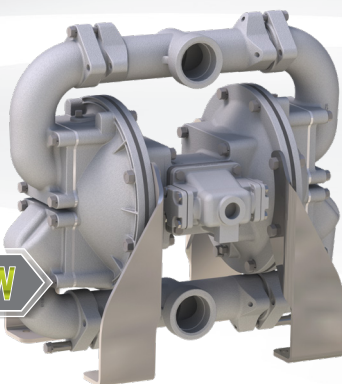
OPTIONS

Porting	Wet End	Elastomers		Air End
1" NPT / BSP Threaded	Aluminum	Nitrile (Buna)	Fluorocarbon (FKM)	Aluminum
	Stainless Steel	Neoprene	EPDM	Cast Iron
		Hytrel®	Urethane	
		Santoprene®		

Santoprene® is a registered tradename of Exxon Mobil Corp. Hytrel® is a registered trademark of E.I. du Pont de Nemours and Company.

2" **HDF2 Metallic**

50mm



SOLIDS HANDLING

Up to 2" (50 mm)

MAX FLOW

208 GPM (787 LPM)

MAX PRESSURE

125 psi (8.6 bar)

DISPLACEMENT

0.47 gallon (1.8 liter)

OPTIONS

Porting	Wet End	Elastomers		Air End
2" NPT / BSP Threaded	Aluminum	Nitrile (Buna)	Fluorocarbon (FKM)	Aluminum
	Cast Iron	Neoprene	EPDM	Cast Iron
	Stainless Steel	Hytrel®	Urethane	
		Santoprene®		

EVOLUTION

3-4" HDF3-A / 4-A Metallic

75-102mm



SOLIDS HANDLING

Up to 3" (75 mm)

MAX FLOW

310 GPM (1,173 LPM)

MAX PRESSURE

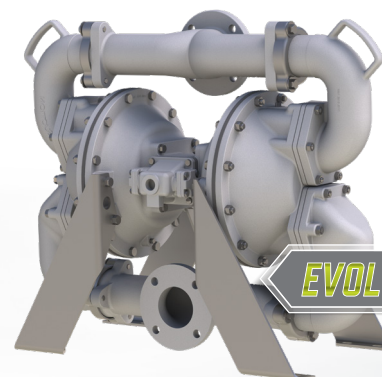
125 psi (8.6 bar)

DISPLACEMENT

1.6 gallon (6.06 liter)

OPTIONS

Porting	Wet End	Elastomers		Air End
3" ANSI Flange	Aluminum	Nitrile (Buna)	EPDM	Aluminum
4" ANSI Flange		Neoprene	Urethane	
		Santoprene®		



3-4" HDF3-M / 4-M Metallic

75-102mm



SOLIDS HANDLING

Up to 3" (75 mm)

MAX FLOW

303 GPM (1,147 LPM)

MAX PRESSURE

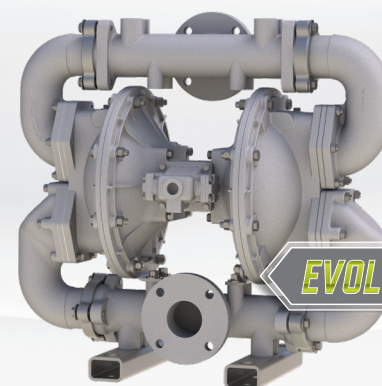
125 psi (8.6 bar)

DISPLACEMENT

1.15 gallon (4.35 liter)

OPTIONS

Porting	Wet End	Elastomers		Air End
3" ANSI Flange	Cast Iron	Nitrile (Buna)	EPDM	Cast Iron
4" ANSI Flange		Neoprene	Urethane	
		Santoprene®		



2" HD20F Non-Metallic

50mm



SOLIDS HANDLING

Up to 1.8" (46mm)

MAX FLOW

150 GPM (568 LPM)

MAX PRESSURE

100 psi (7.0 bar)

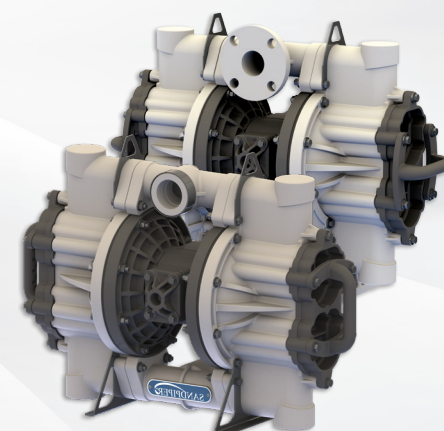
DISPLACEMENT

0.50 gallon (1.9 liter)

OPTIONS

Porting	Wet End	Elastomers		Air End
2" NPT / BSP Threaded	Polypropylene	Nitrile (Buna)	Fluorocarbon (FKM)	Polypropylene
2" ANSI / DIN Combination Flange	Stainless Steel (Seats only)	Neoprene	EPDM	
		Hytrel®	Urethane	
		Santoprene®		

Santoprene® is a registered trademark of Exxon Mobil Corp. Hytrel® is a registered trademark of E.I. du Pont de Nemours and Company.



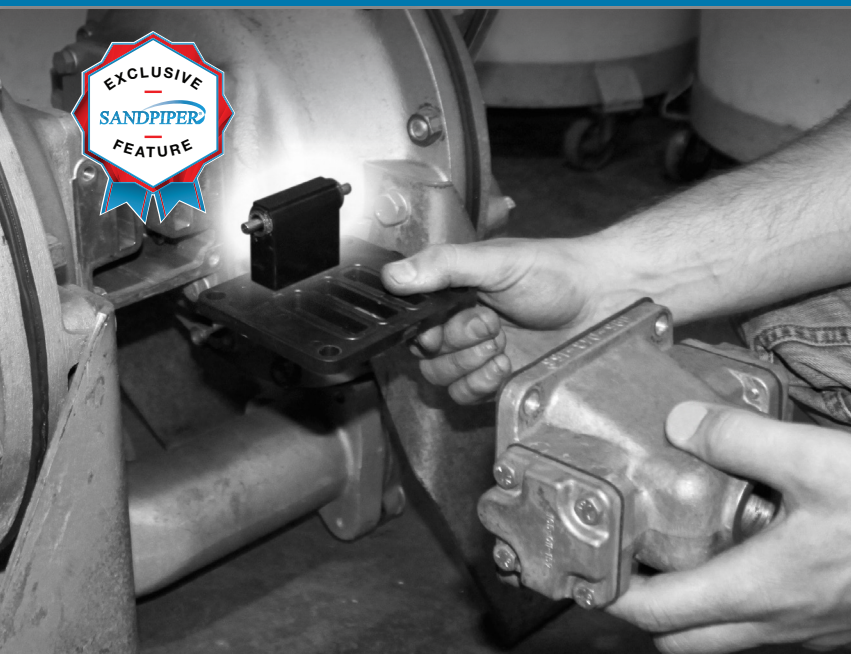
SANDPIPER'S EXTERNALLY SERVICEABLE AIR DISTRIBUTION SYSTEM (ESADS+PLUS)

SANDPIPER's Externally Serviceable Air Distribution System (ESADS) allows for quick and easy access to the pilot and spool valves without removing the pump from service, maximizing up time!

SANDPIPER

VS

COMPETITORS



**The Air Motor's Pilot Valve
is the Most Often Serviced Part
on an AODD Pump**



**5 MINUTES FOR
MAINTENANCE / CLEANING**

Accomplished in minutes without
removing pump from service
by removing only 4 bolts



Saves you money by
minimizing downtime



**55 MINUTES OR LONGER FOR
MAINTENANCE / CLEANING**

The air valve components can only be
accessed by removing the pump from
service and taking it entirely apart



Costs you money due to
extended downtime

PARTS & ACCESSORIES

EVERYTHING YOU NEED TO COMPLETE YOUR PUMP SYSTEM

SANDPIPER GENUINE PARTS SERVICE KITS

WET END KITS / AIR END KITS

SANDPIPER is pleased to offer you the trusted Genuine Parts you need, sold in convenient kits or individual parts. Whatever you need to make pump repairs, we have you covered.

Wet End Kits

- Diaphragms
- Flaps
- Seats

Air End Kits

- Gaskets
- O-Rings
- Seals
- Retaining Rings
- Air Valve Sleeve and Spool
- Pilot Valve Assembly
- Lubricant



AIR FILTER / REGULATORS

RELIABLE FILTER / REGULATORS SPECIFICALLY DEVELOPED FOR AODD PUMPS

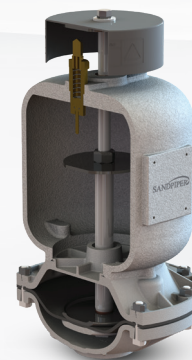
- Adjust and lock to deliver constant air pressure
- Polyurethane bowl offers improved chemical resistance
- Include a durable liquid filled pressure gauge to dampen the effects of pulsation and vibration
- Integral mounting slots eliminate the need for mounting brackets
- Automatic drain removes condensate



TRANQUILIZERS®

PULSATION DAMPENERS / SURGE SUPPRESSORS

- Provide virtually surge-free flow
- Steady pressure
- Less vibration and noise
- Automatically self-charging and self-venting
- Protect other system components
- Long-life balanced diaphragm



LIQUID LEVEL CONTROL

AUTOMATIC, FLOAT ACTUATED UNIT OPENS & CLOSSES AIR SUPPLY TO YOUR AODD PUMP

- Pneumatic operation requires no electricity
- Adjustable operating range from a few inches to 9 feet (2.7 meters)
- Simple design is easy to install and operate, with few moving parts
- Reversible operation capable



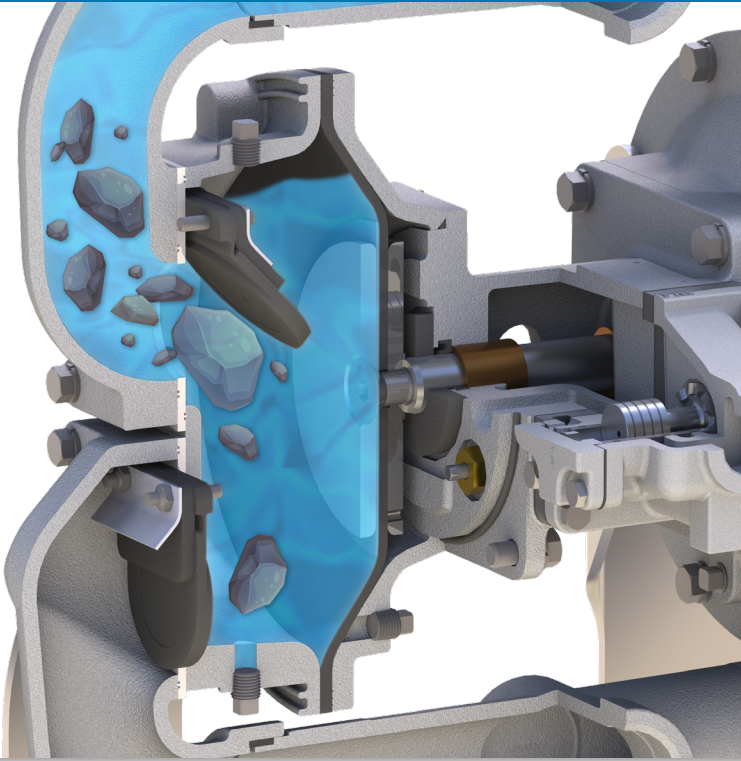
SANDPIPER

HEAVY DUTY FLAP VALVE PUMP

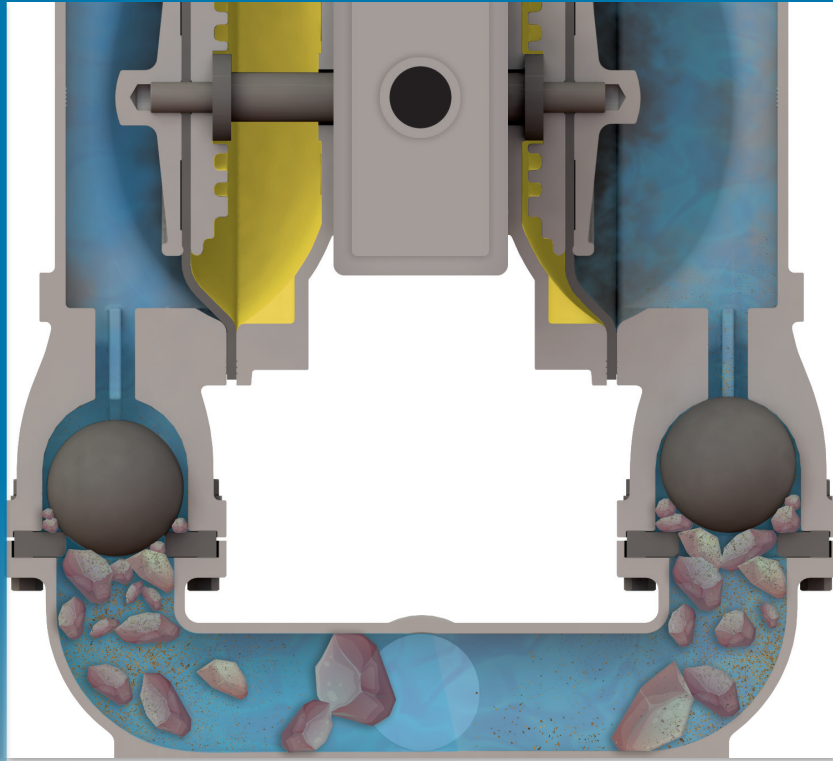
VS

TYPICAL

TOP DISCHARGE BALL VALVE PUMP



**Large Solids Easily Pass Through
The Pump**



**Large Solids Cannot Pass Through
The Pump Affecting Operation**



OUR SIGNATURE ENSURES YOUR SUCCESS

SANDPIPER Signature Series AODD pumps are engineered to deliver industry leading durability and performance, even for your most severe applications and environments.

SANDPIPER®

Warren Rupp, Inc. | A Unit of IDEX Corporation
800 North Main Street, Mansfield, OH 44902 USA
Phone: 419.524.8388 | Fax: 419.522.7867
SANDPIPERPUMP.COM



Contact Your Local Distributor to Place Your Order:

IDEX

©Copyright 2019 Warren Rupp, Inc. All Rights Reserved.

SP_HDFPumpBrochure-rev0619